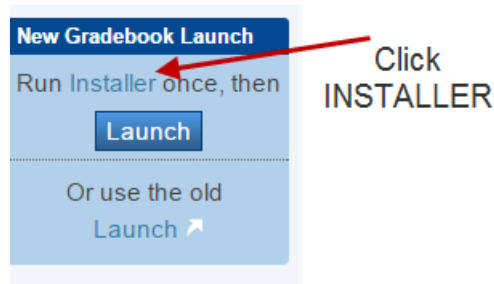


# How to Install the New PowerTeacher Gradebook 2.8 Launcher

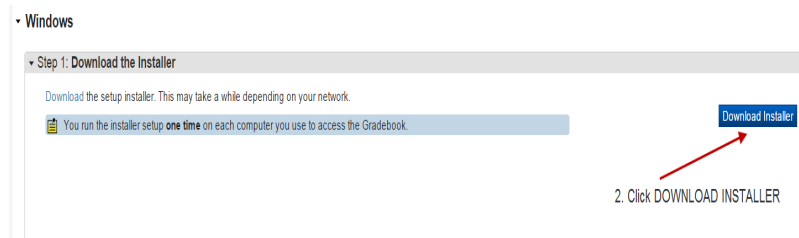
MAC users, please follow the on-screen instructions under the MAC heading, under the Install tab.

## Step 1: Click the Installer Link

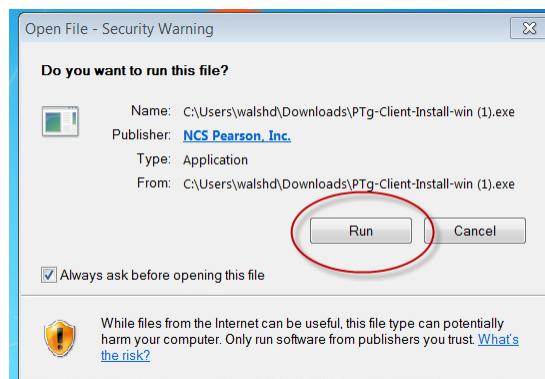
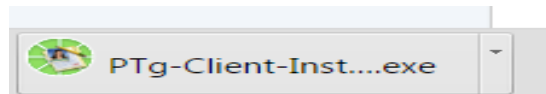
On the PowerTeacher portal left Navigation menu you will notice the "New Gradebook Launch" feature. Click the Installer link and follow the on-screen instructions.



**Step 2: Download the Installer.** You must run the Installer setup one time on each computer that you use to access the Gradebook.



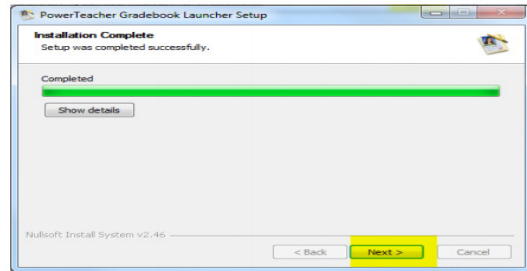
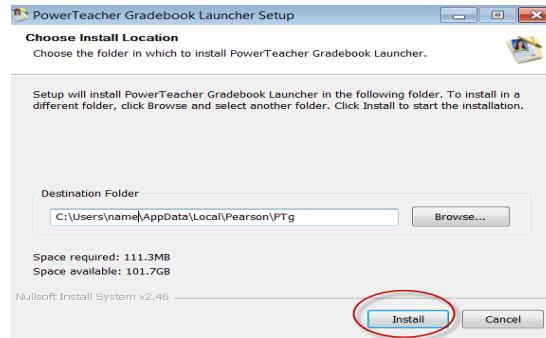
**Step 3: Click the exec file. Click RUN the exec file**



#### Step 4: Choose Install Location

The Choose Install Location dialog appears. Select Install to use the default location.

Click On the next screen click



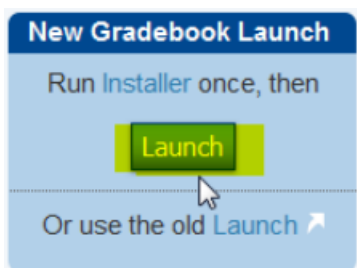
#### Step 5: Finish Installation

On the next screen, click Finish. To finish the installation setup, you must launch the Gradebook from the PowerTeacher Portal.



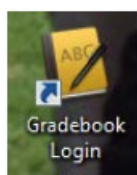
#### Step 6: Activate Installation

Click Launch to activate the Gradebook, from PowerTeacher. Use the Launch in the Install Instructions steps. The Gradebook opens and the setup for the new launch method is complete. This creates the icon on your desktop.

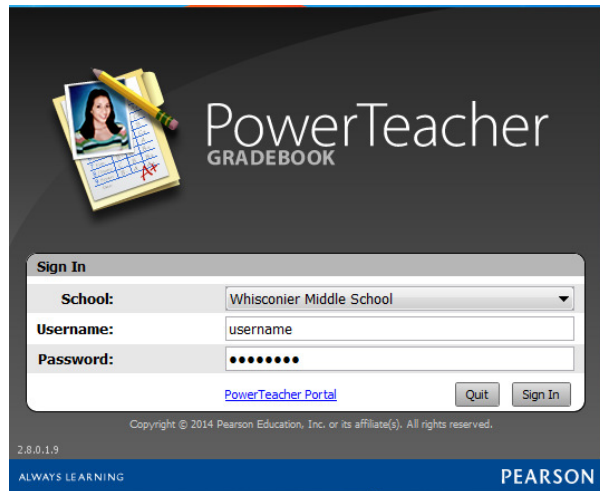


#### Step 7: Launching Gradebook

Once the installation setup is complete, open the Gradebook using either of these methods: • Click Launch on the New Gradebook Launch area. or Click the desktop shortcut icon.



**When using the desktop icon to  
access the gradebook----  
Usernames & passwords ARE  
CASE SENSITIVE.**



The image shows the PowerTeacher GRADEBOOK login window. At the top left is a graphic of a notepad with a pencil and a photo of a woman. The title 'PowerTeacher GRADEBOOK' is in the top right. The 'Sign In' window has three fields: 'School' (a dropdown menu showing 'Whisconier Middle School'), 'Username' (a text box with 'username'), and 'Password' (a text box with masked characters). Below the password field is a link for 'PowerTeacher Portal'. There are 'Quit' and 'Sign In' buttons. At the bottom, it says '2.8.0.1.9', 'Copyright © 2014 Pearson Education, Inc. or its affiliate(s). All rights reserved.', 'ALWAYS LEARNING', and the 'PEARSON' logo.

**Sign In**

**School:** Whisconier Middle School

**Username:** username

**Password:** ••••••••

[PowerTeacher Portal](#)

2.8.0.1.9  
Copyright © 2014 Pearson Education, Inc. or its affiliate(s). All rights reserved.  
ALWAYS LEARNING PEARSON